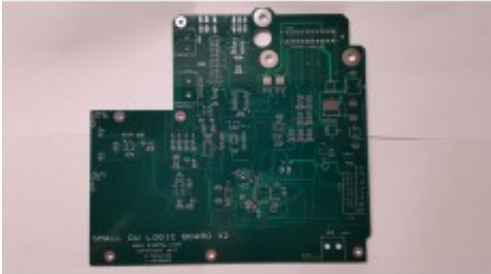


Tesla Small Drive Unit Bare Logic Board



Brand: EVBMW

Product Code: SDU_V2

Availability: 6

Weight: 0.00kg

Dimensions: 0.00cm x 0.00cm x 0.00cm

Price: 60.00€

Ex Tax: 60.00€

Short Description

Logic board bare unpopulated PCB for the Tesla Small Drive Units.

Fits both front and rear small drive units.

Price includes worldwide tracked postage.

Software and resources available on Github:

<https://github.com/damienmaguire/Tesla-Front-Drive-Unit>

This is A BARE PCB WITH NO COMPONENTS OR SUPPORT.

Requires electronics and SMD soldering skills.

Motorsport proven : <https://www.youtube.com/watch?v=mhGwcPWCbsA>

Description

Logic board bare unpopulated PCB for the Tesla Small Drive Units.

Fits both front and rear small drive units.

Price includes worldwide tracked postage.

Software and resources available on Github:

<https://github.com/damienmaguire/Tesla-Front-Drive-Unit>

This is A BARE PCB WITH NO COMPONENTS OR SUPPORT.

Requires electronics and SMD soldering skills.

Motorsport proven : <https://www.youtube.com/watch?v=mhGwcPWCbsA>